



Royal Victoria Yacht Club
General Sailing Instructions, Part 2:
Wednesday Night Series
Harvest Moon Series Amendments

As at 22 August 2023






PREAMBLE. The 2023 Harvest Moon Series (6, 13, 20 & 27 September) will be in a pursuit format. The slowest boats will start at 1800 and the remaining boats will start in one-minute intervals based on their PHRF-BC ratings. The start time for each boat will be the same in each of the four races. The course will be determined on the day of the race, based on the conditions to ensure that every boat has an equal opportunity of finishing first. The start and finish will be between the race committee boat Discovery Isle (DI) and the RVYC Mark 4.

17. THE START

17.1 Starting Signals, RRS 26 for the first start. For subsequent starts a single horn will be sounded each minute until all boats have started. See below for the starting times based on PHRF-BC rating:

	lowest rating	highest rating
18:00	213	300
18:01	201	212
18:02	189	200
18:03	177	188
18:04	165	176
18:05	153	164
18:06	141	152
18:07	129	140
18:08	117	128
18:09	105	116
18:10	93	104
18:11	81	92
18:12	69	80
18:13	57	68
18:14	45	56
18:15	33	44
18:16	21	32

17.3 Harvest Moon Flag

(a) Long-distance series –code flag “D” 

17.4 Starting Times:

(1) The warning signal will be given at 1755 hrs for the Harvest Moon series.

17.5 Starting Line

(a) The starting line is defined as a line between a staff displaying an orange flag on a race committee boat and a RVYC Mark 4.



19. COURSE SIGNALS

19.2 Harvest Moon Series

- (a) The course will be displayed by the race committee boat. The displays will indicate the relevant course using a sequence of mark designation letters and numbers for the course (see section 30.1).
- (b) Unless indicated all marks will be left to port.
- (c) For starboard roundings the number will be followed by the letter **S** following the mark designation letters and numbers for the course.

20. INDIVIDUAL RECALL RRS 29.1

21. GENERAL RECALL RRS 29.2

24. FINISHING LINE

24.1 Harvest Moon Series. Between a blue flag on the RC boat and RVCYC Mark 4.












26. TIME LIMITS All Harvest Moon races finish no later than **1930** hrs. Boats not finished by that time will be scored DNF.

30. COURSES FOR LONG DISTANCE SERIES AND HARVEST MOON SERIES



General Sailing Instructions, Part 2: Harvest Moon Series Amendments

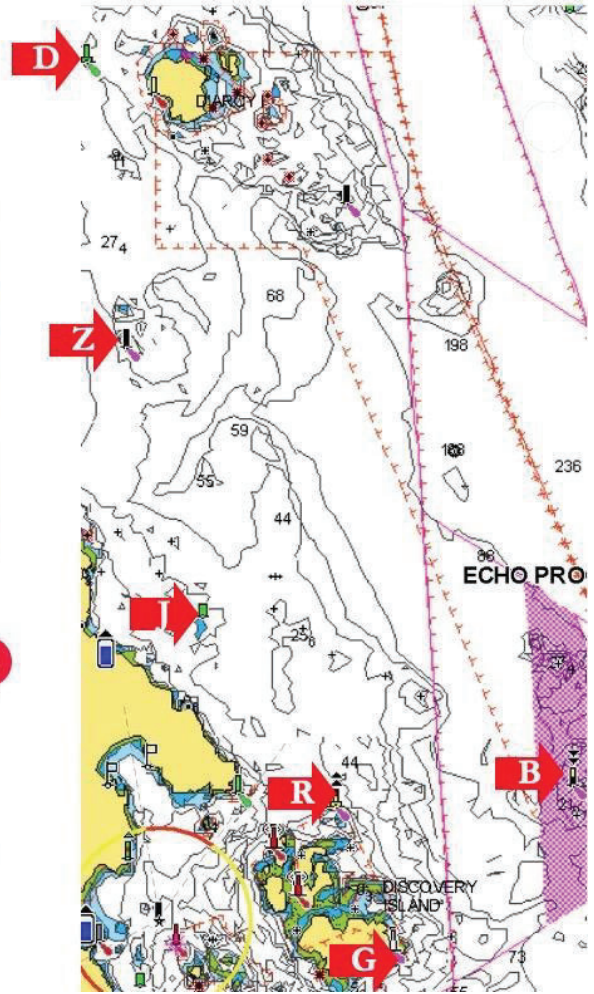
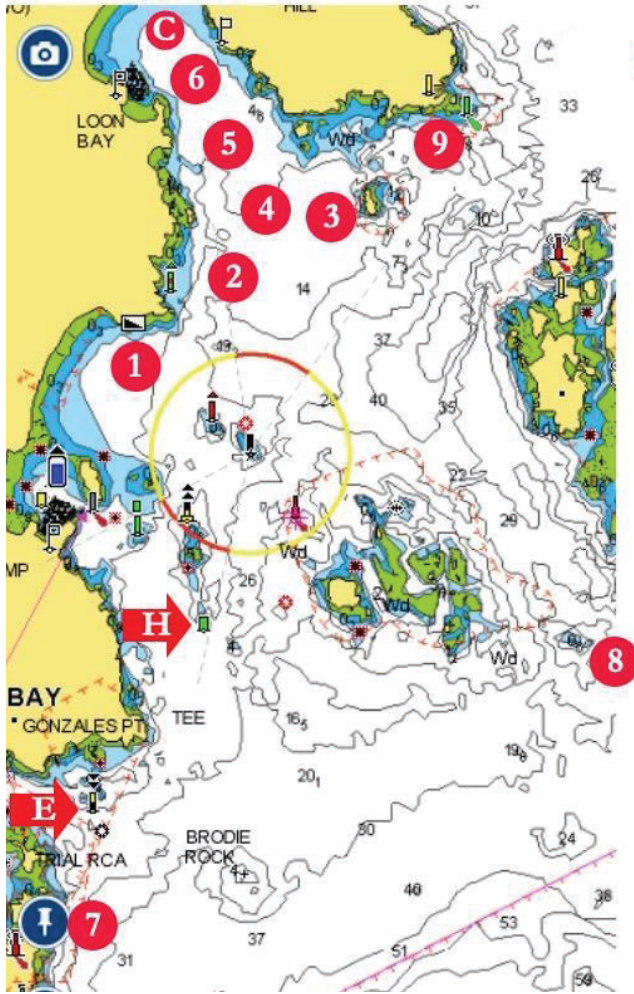
30.2 Marks, Finish Lines and Their Designations

<i>Code</i>	<i>Race Mark Name</i>	<i>D</i>	<i>M</i>	<i>D</i>	<i>M</i>
 A	inflatable mark short of the windward mark				
 C ¹	mini-12 mooring buoy	48	27.23	123	17.48
E	Enterprise Channel buoy "VE"	48	24.45	123	17.91
G	Discovery Island (Seabird Point)	48	25.35	123	13.52
H	Lee Rock buoy "V25" (Harris Island)	48	25.11	123	17.29
J	Johnstone Reef buoy "V29"	48	28.75	123	16.38
 L	leeward mark of the ATB course				
 M	inflatable mark to windward of start line				
P	<i>buoys to port</i>				
R	Fulford Reef buoy "VK"	48	26.88	123	14.37
S	<i>buoys to starboard</i>				
 W	windward mark of the ATB course				
X	<i>finish line of the ATB course</i>				
Y	<i>close abeam mark 4</i>				
 1	RVYC private mark northwest of Todd Rock	48	26.11	123	17.62
 2	RVYC private mark east of Funnel Cove	48	26.54	123	17.20
 3	RVYC private mark west of Jemmy Jones Island	48	26.63	123	16.56
 4	RVYC private mark in the throat of Cadboro Bay	48	26.74	123	17.09
 5	RVYC private mark in the middle of Cadboro Bay	48	26.90	123	17.16
 6	RVYC private mark in upper Cadboro Bay	48	27.16	123	17.37
 7	RVYC private mark east of Trial Island	48	24.08	123	17.94
 8	RVYC private mark southeast of Virtue Rock	48	24.94	123	14.99
 9	RVYC private mark southwest of Ten Mile Point	48	26.78	123	16.10

¹ In memory of David Cook.



30.3 Graphical Representation of the Locations of Marks



NB: Diagram is not to be used for navigation.